

This Guess paper is presented to our Young Viewer's  
With lot's of best wishes  
For  
Board Exams - 2010

Vivek sir

For any queries, please feel free to contact to :-

## **Career Academy Tutorials**

**# 66, Saket Nagar, infront of church,  
Ranjhi, Jabalpur, M.P – 482005**

**Mobile :- 09424677661 (24 hours)**

**Email :- [careeracademy@ymail.com](mailto:careeracademy@ymail.com)**

**[vivekjab@hotmail.com](mailto:vivekjab@hotmail.com)**

**[vivekonjob@yahoo.co.in](mailto:vivekonjob@yahoo.co.in)**

**pdfMachine**

**A pdf writer that produces quality PDF files with ease!**

Produce quality PDF files in seconds and preserve the integrity of your original documents. Compatible across nearly all Windows platforms, simply open the document you want to convert, click "print", select the "Broadgun pdfMachine printer" and that's it! Get yours now!

**Practice Paper**  
**Biology**  
**Class - X<sup>th</sup>**

---

- Expand the following : C.F.C, I.U.C.D, O.C and C.N.G
- Define hormone. What is the function of plant hormone cytokinin
- Define blood pressure ? What is the range of B.P of a healthy man ?
- Draw label diagram of solar cooker. Can a polythene sheet be used instead of thick glass, why ?
- What contribution forest officer Sh. A. K. Banerjee made in the protection of Environment ?
- How does Mandel's experiment show that traits are inherited independently ?
- What is meant by vegetative propagation ? Describe its various ways.
- Write the names of source gland and functions of the following hormones (i) Adrenaline (ii) Thyroxin
- What are the various evidences in favour of evolution ?
- If we chew a wheat grains for a long time it tastes sweet why ?
- Name the finger like projections present on the inner lining of intestine and state their function.
- What is meant by systole and diastole ?
- What is meant by pollination? Name its various types of pollination agents ?
- Labeled the diagram given, and explain how exchange of gases occurs in leaf of a plant.
- Draw cross - section of human heart, label it **arrow** path of circulation by arrows only.
- What are the different methods of contraception ?
- What is regeneration ? Explain with the help of suitable example ?
- Describe the process of fertilization in a flowering plants ?
- Name one gaseous and one liquid excretory product of plants.
- Name the type of respiration for the given end products  
a )water and carbon dioxide b) ethyl alcohol.
- Mention two ways by which humans tried to conserve the wild life in our country.

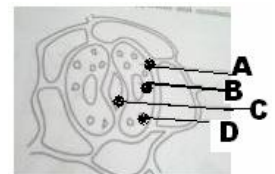
**pdfMachine**

**A pdf writer that produces quality PDF files with ease!**

Produce quality PDF files in seconds and preserve the integrity of your original documents. Compatible across nearly all Windows platforms, simply open the document you want to convert, click "print", select the "Broadgun pdfMachine printer" and that's it! Get yours now!

- **Write the main function of the following parts of the nervous system**
  - a) Forebrain
  - b) Cerebellum
  - c) Mid brain
  - d) Spinal cord.
- **Give reason for the following :**
  - a) It is not possible to have more than six steps in a food chain.
  - b) The flow of energy is unidirectional in ecosystem.
- Arrange the following according to their evolutionary closeness. Honey bee, bird, gorilla, and fish
- Whose DNA among the following do you think is most similar to that of humans and Why ?
- Adrenalin is released in blood when you suddenly see a dog approaching towards you at a great speed. Give reasons.
- Name the two vital body systems which are affected by this hormone. What effects are produced in these systems by this hormone ?
- What are the two types of water harvesting ? How is rain water harvested ? Why is rain water harvesting important in the present scenario ? (Mention any two points)
- The genotype of wrinkled seeds is denoted as  $rr$  and that of round seeds as  $RR$ . When these two are crossed
  - (i) What shape of seeds and in what ratio would you expect in their  $F_2$  progeny ?
  - (ii) Write the genotypes of the plants obtained if  $F_1$  plants are self pollinated.
  - (iii) Why do the round seeds occur in greater ratio in the  $F_2$  generation ?
- Draw a well - labelled diagram of the longitudinal section of the ovary showing the process of germination of pollen grain.
- Define pollination.
- What happens to the style, stigma, petals, sepals and stamen after the fertilization occurs in the flower ?
- What are the essential components required for the process of photosynthesis ? Write the steps involved in the process of photosynthesis.
- Where bile is stored ?
- Name the plant hormone which inhibits growths ?
- What is genetic drift ?
- Name the instrument used to measure the blood pressure ?
- How information passes through neurons ?

- How do we know how old fossils are ?
- What is meant by pollination ? Describe its various types along with name of various pollination agents ?
- Draw a diagram of Human Brain ?
- What is meant by pollination ? Name its various types of pollination agents ?
- Draw the labeled diagram given, and explain how exchange of gases occurs in leaf of a plant.
- Draw cross-section of human heart ; label it arrow path of circulation by arrows only.
- Describe the working of artificial Kidney ?
- What is biodiversity ?
- Name the two endocrine glands in the brain.
- What happens at the synapse between two neurons ?
- How do Mendel's experiments show that traits are inherited independently ?
- How does our body respond when Adrenaline is secreted into the blood.
- What are auxins ? Where is it synthesized ? Write its role in bending of plants towards light.
- Give three differences between male and female reproductive system.
- Describe the structure and function of nephron with the help of a neat labeled diagram.
- What is wind energy farm ? Why it can be established only at specific location. Give reasons to support your answer.
- Label the following diagram.
- Explain the process of digestion of fats and Protein in our body
- How does genes control the characteristics ?
- Explain the following 1)genetic drift 2) Acquired and inherited traits
- Differentiate between plant movements depend on growth and independent of it
- Discuss the transportation of water and food in plants
- Expand I.U.C.D
- Find out the amount of water contamination regulated by Coliformbacteria ?



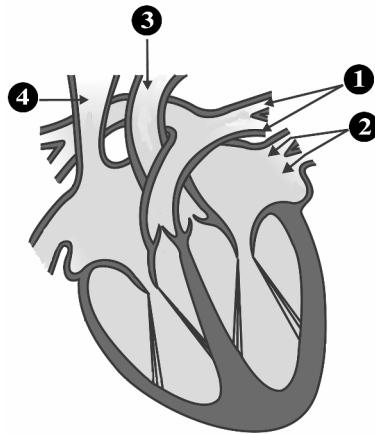
**pdfMachine**

**A pdf writer that produces quality PDF files with ease!**

Produce quality PDF files in seconds and preserve the integrity of your original documents. Compatible across nearly all Windows platforms, simply open the document you want to convert, click "print", select the "Broadgun pdfMachine printer" and that's it! Get yours now!

- How is the amount of urine regulated? Give the functioning of Nephrons in a kidney.
- Explain the three R'S in saving the environment.
- Write the functions of the following hormones:
  - (a) Thyroxin
  - (b) Adrenaline
  - (c) Testosterone
  - (d) Prolactin
  - (e) Calcitonin
  - (f) Insulin
- Why is iodised salt advisable for the human beings ?
- How is blood pressure measured ? What are the features of Hypertension ?
- Distinguish giving suitable examples between aerobic and anaerobic respiration.
- What are the end products of two types of respiration ?
- Draw a neat labeled diagram of the fertilization process in plants and label the following parts: Ovary , Pollen tube , Antipodal cells , Synergids
- What are the brief benefits that society can get from Silviculture? Why do we need to conserve forests and wildlife ?
- Explain how the absorption of food molecules is carried out in the small intestine
- What are the brief methods to avoid pregnancy? Add a note on Parturition.
- Explain the role of each part in human excretory system in filtering out waste products from the body. Draw the relevant diagram with neat labellings.
- How do genes control the characteristics?
- Explain the following 1)genetic drift 2) Acquired and inherited traits
- Differentiate between plant movements depend on growth and independent of it
- Discuss the transportation of water and food in plants .
- Which organelle of cell is the site of breakdown of pyruvates to give carbon dioxide,water and energy

- Name two plants that show parasitic nutrition.
- What are considered 'biodiversity hotspots' ?
- Draw a neat and labelled diagram of a box type solar cooker.
- What is meant by rainwater harvesting? Mention the advantage of following this practice.
- A cow loses a lot of weight due to starvation ? Will this character be transmitted as an inherited trait ? Justify.
- Describe the characteristics of flow of energy in an ecosystem ?
- Label the four parts indicated by 1, 2, 3 and 4 in the diagram given below, Mention the functioning of 1, 2, 3 and 4 in the above diagram.



- Name the hormones secreted by testis and ovaries.
- What is the role of sex hormones in the process of reproduction ?
- Which component of sunlight is regarded as harmful to us? How is it normally prevented from reaching us ?
- What can destroy this natural protection ?
- With the help of a neat and labeled diagram, explain the structure & functioning of human digestive system.
- With the help of a neat and labeled diagram, explain the structure and functioning of human respiratory system
- Name the two substances which are responsible for the control and coordination in plants.

**pdfMachine**

**A pdf writer that produces quality PDF files with ease!**

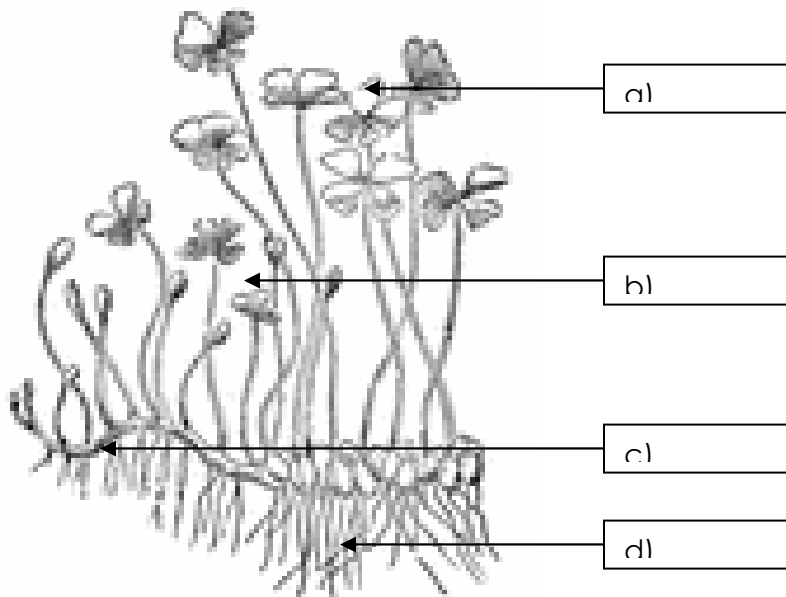
Produce quality PDF files in seconds and preserve the integrity of your original documents. Compatible across nearly all Windows platforms, simply open the document you want to convert, click "print", select the "Broadgun pdfMachine printer" and that's it! Get yours now!

- What are Phytohormones ? Name any two.
- What is the difference between photoperiodism and phototropism ?
- What are nastic movements? Give one example.
- What are the different Hormones found in Plants and their functions ?
- What are receptors ? What type of receptors detects smell and taste ?
- How the information is send to brain in animals ?
- What is cranium?
- How are tissues protected in a brain ?
- What is role of brain in reflex action ?
- What happens at the synapse between two neurons ?
- What is stimulus ?
- What are the different types of nervous systems found in human body? Mention the functions of each.
- Draw the schematic diagram of reflex arc. Define reflex action with suitable example.
- Draw the labeled structure of human brain.
- What are the four main parts of the fore brain ? Give the function of each part.
- What are the three parts of the midbrain and their functions ?
- Which part of the human brain is responsible for Intelligence and Memory, Adjustment movement and posture and Smell ?
- Give the role of Frontal lobe, temporal, lobe and medulla oblongata.
- Name the different lobes found in the forebrain and give their functions.
- What is geotropism ?
- What are plant hormones ?
- What are controlled movements ? How this process happens ?
- What are electrical impulses ? What are its limitations ?
- How the stimulated cells overcome the limitations of electrical impulses ?

- How do auxins promote the growth of a tendril around a support ?
- Which hormone is responsible for the wilting of leaves in plants ?
- What are hormones ? Who coined the term hormones ?
- What is function of adrenaline? Explain briefly ?
- Why diabetes is happen ? What is insulin ?
- Draw the diagram showing endocrine glands in a male body/female body and label:
- Pituitary,Thyroid,Adrenal,Testis/ovaries,Thalamus and Hypothalamus.
- Name the hormone associated with a) Reduction of blood glucose in the body b) Overall metabolism of the body.
- Write the function of testes and ovaries.
- What is function of pituitary gland ?
- What is need of control and coordination in the body ?
- Which is the structural and functional unit of nervous system ? Describe with the help of a diagram.
- “Nervous & the hormonal system together perform the function of the control and coordination in the humans”.Justify.
- Name the cell which form lining of kidney tubules and salivary glands ?
- Where are bone cells located? what is it composed of ?
- How are cardiac muscles different from striated muscles ?
- Name any 4 triploblastic organisms.
- Name the tissues storing fats in our body ?
- Name the type of tissue present on the tip of the stem node ?
- What is the function of fibres in xylem ?
- Draw the labeled diagram of areolar tissue.
- What are properties of vertebrates ?
- How do poriferans differ from coelenterates ?
- What are the differences between gymnosperms and angiosperms ?
- How are glandular epithelium formed ? In which subcategory is placed ? What is its function ?



- What is the type of tissue located at the tip of our nose ? how is different from bone tissue.
- How does the bone retains its strength even after several years of life ? How does it grow ?
- What is function of blood ?
- Draw a neat and labeled diagram of a) Euglena b) Paramecium
- Label the diagram of pteridophyta (Marsilea ).



- What are cryptogames ? Draw a labeled diagram of Hydra.
- **Identify the groups which they belong to and give 2 examples of its members :**
  - (a) Sucker in parasites and segmented body
  - (b) Blood does not flow in blood vessels but also in body cavity. It also has ‘joined legs’.
  - (c) It is cold-blooded and it also has two chambered heart.
  - (d) It has lungs in larval stage and can breath through its skin.
  - (e) It has hard exoskeleton and has pores called ostia in its body
  - (f) It shows sexual dimorphism (males differ from female) and some of its members cause disease like elephantiasis.
- Write the differences in the follow :
  - (a) Poriferans and coelenterates
  - (b) Annelids and arthropods
  - (c) Amphibians and reptiles
- Name any two excretory products in plants.
- What name has been given to those organisms which break down the complex organic matter present in dead animals and plants ? Give an example of such an organism.
- How do variations occur in the asexually reproducing organisms ?
- Why do birds and mammals have four chambered hearts ?

- Write any two points of differences between respiration in plants and respiration in animals.
- Mention four ways by which we can achieve development and conservation of environment simultaneously.
- Write the functions of salivary glands and pancreas in the process of digestion in our body.
- How does speciation occurs ? Mention any three ways in which a new species originates from already existing ones.
- Define biomagnification.
- Paper can be recycled and is biodegradable also. Which option would you choose to get rid of waste paper ? Why ?
- Draw a labeled diagram of human brain and label the following parts on it:  
a) hypothalamus b) cerebellum c) Cerebrum d) Medulla.
- Write any two functions of auxins in the plants.
- Or
- Draw a neat and well labeled diagram of L.S. of carpel showing germination of pollen.
- Name one unisexual and bisexual flower.
- What happens to the petals, sepals, stamens, stigma and style after Fertilization ?
- What are the functions of saliva ?
- Define parthenogenesis.
- What is a cardiac cycle ?
- Give the differences between DNA and RNA.
- Draw a diagram of human alimentary canal starting from mouth and ending at anus. Label at least six parts.
- Explain the peripheral nervous system in human beings.
- Give the differences between respirations and breathing.
- Explain main types of sources of water pollution.
- Explain briefly the different types of tropic movements in plants.
- What are homologous organs ? How do they differ from analogous organs ? How does the study of comparative anatomy provide evidence in favour of organic evolution ?

- Give two examples of recyclable materials ?
- Name four Plant Hormones ?
- Which organ secretes the Hormone Insulin ? State it's Location and Function in the Human Body ?
- Why are thermal Power Plants set up near Coal or Oil Fields ?
- Explain the function and location of Male Reproductive System in Human Beings ?
- Explain Aerobic and Anaerobic Respiration ?
- Explain the three R's in conserving Natural Resources ?
- Draw a neat diagram of the Longitudinal Section of a Flower ?
- What is Tropic Level? Name the various tropic Level's in a Food Chain ? Who occupy the highest position in a Food Chain ?
- How Mendel does's discovered that traits may be dominant or recessive ?
- Draw a neat and labeled diagram of Human Brain ?
- Write the Various functions of Hind- Brain ?
- Explain Double Circulation with the help of a neat and labeled diagram ?
- Where is protein digesting enzyme pepsin released and how is it not able to act on stomach wall ?
- Give any two sources of variation in asexually reproducing organism.
- How does the disappearance of all the fungi & bacteria affect the fish population in an aquatic ecosystem ?
- A potato plant synthesise the food in the form of glucose and stores in form of starch. How this glucose reach to storing parts and in which form ?
- The genotype of white seed coat gram is BB and yellow seed coat gram is bb. When these two are crossed.
  - 1.What colour of seed coat would you expect in their  $F_1$  progeny ?
  - 2.Give the percentage of yellow seed coat plant if  $F_1$  plants are self pollinated.
  - 3.In what ratio would you find the genotype of BB and Bb in the  $F_2$  progeny ?
- Name the excellent fuel and what is the percentage of Methane in it? State its use. Name the type of microorganism involved in producing this gas.
- Define germination and make labeled sketch showing the structure of a gram seed.
- Which part of the brain maintains posture and equilibrium of the body? How does phototropism occur in plants ?

- Write one feature which is common to each of the following pair of term /organs.  
(i) Ovary / Testes (ii) Arteries / Phloem (iii) Egg yolk / cotyledon (iv) Fission / vegetative propagation (v) Vas deferens / fallopian tube.
- Quote three instances where human intervention saved the forests from destruction.
- Describe surgical methods of birth control. “It is matter of chance whether a couple will give birth to a boy or a girl.” Justify the statement.
- Name a plant parasite ?
- State function of cytokinins ?
- Name the ornamental plants produce by tissue culture ?
- Write a note on Archaeopteryx ?
- If you chew a pieces of bread for a long time it taste sweet why ?
- What is reflex Action ? Give example of daily life ?
- Name two type of drugs used in chemical method of population control ?
- Different between natural & artificial selection ?
- Draw a diagram of alimentary canal labels it ?
- What is meant by pollination ? Describe various type & with name of pollination ?
- Describe menstrual Cycle ?
- What is dialysis ? Describe the working of artificial kidney ?
- Give an advantage of solar cell over windmill.
- Name the type of reproduction in Leishmania.
- When we eat something we like, our mouth ‘Waters’. What is the actual meaning of this statement ?
- What is advantage of taking in of water by fish through their mouth and forcing it past the gills ?
- Compare the intestinal length of herbivores and carnivores.
- Give three common features in lungs & gills.
- Give the function of thymus gland and pineal gland.
- Three friends went for fishing to a pond. The nearby farms have fresh, greenish, insect free peas. Will you suggest them to sit there or to go elsewhere? Support your answer with suitable reason.

**pdfMachine**

**A pdf writer that produces quality PDF files with ease!**

Produce quality PDF files in seconds and preserve the integrity of your original documents. Compatible across nearly all Windows platforms, simply open the document you want to convert, click “print”, select the “Broadgun pdfMachine printer” and that’s it! Get yours now!

- Give principle of the following :  
(i) Solar cell    (ii) Wind mill    (iii) Geothermal energy.
- Give two limitation of nerve impulse. How can our body over come this ?
- Answer the following by giving reason:
  - 1.Fossil furnishes the direct and most reliable evidence for evolution.
  - 2.All organisms have many common features.
  - 3.Tail of mice appears in next generation of it if its tail is cut down.
  - 4.Artificial selection is beneficial.
  - 5.The population of red beetles disappeared and green coloured beetles population increased in each generation in spite of presence of predator like crows ?
- Draw labeled diagram of female reproductive system in humans and mark the organs where fertilization and implantation takes place.
- What happens if egg is not fertilized ?
- After fertilization, a tissue is formed called placenta; explain its structure and functions ?
- By which process root absorb water ?
- What are meninges ?
- What is meant by gestation ?
- Give Reason of the following :
  1. All organisms have many common features
  - 2.Testes are located outside the abdominal cavity in a sac called scrotum ?
  3. What are the functions of food that we eat ?
  - 4.What is the composition of nerves system in higher vertebrate ?
  - 5.What is the triple fusion in higher plant ?
  - 6.Name the various theory of evolution proposed so far ?
- Draw the diagram of Nephron ?
- In Brief describe the various type of plant movement ?
- What are the various evidences in favour of evolution?
- Describe the causes of circulation of blood from heart to organs & back to heart ?
- Differentiate between an endocrine and an exocrine gland

**pdfMachine**

**A pdf writer that produces quality PDF files with ease!**

Produce quality PDF files in seconds and preserve the integrity of your original documents. Compatible across nearly all Windows platforms, simply open the document you want to convert, click "print", select the "Broadgun pdfMachine printer" and that's it! Get yours now!

- Which gland of our body acts like both? Name its secretions and their role in our body.
- What is speciation ?
- How are evolution and classification related ?
- Why are all the acquired characters not heritable ?
- How do fossils help us in studying evolution ?
- What are analogous and homologous organs ?
- Why was the Chipko movement started ? How did it help the society ? Give some of the benefits.
- Define with application:
  - a) The Fossil fuel    b) Bio mass    c) O.T.E.    d) Nuclear energy.
- Draw the structure of human heart. Define double circulation
- Name a growth stimulating and a growth inhibiting hormone in plants.
- Where is protein digesting enzyme pepsin released and how is it not able to act on stomach wall ?
- Give any two sources of variation in asexually reproducing organism.
- How does the disappearance of all the fungi and bacteria affect the fish population in an aquatic ecosystem.
- A potato plant synthesise the food in the form of glucose and stores in form of starch. How this glucose reach to storing parts and in which form ?
- Name the excellent fuel and what is the percentage of Methane in it? State its use. Name the type of microorganism involved in producing this gas.
- Define germination and make labeled sketch showing the structure of a gram seed.
- By which process root absorb water ?
- **Give one word/phrase for the following :**
  1. This process ensures continuity of life
  2. It is the basis of survival of the species and evolution.
  3. Plasmodium undergoes this process to produce many daughter cells
  4. Most common mode of reproduction in higher organisms.
  5. The special cells of hydra used for reproduction by budding.
  6. The structure which contains spores in Rhizopus.
  7. Transfer of pollen to the stigma of the same flower.
  8. The period during which reproductive tissue begins to mature in adolescence.
  9. The embryo gets nutrition from the mother through this special tissue.

10. The use of this contraceptive prevents STD's.

- **Give very short answers :**

1. What is the function of Prostate and Seminal Vesicle glands ?
2. Where does fertilization in human female occur ?
3. Name any 2 substances exchanged between mother and embryo.
4. What is an I.U.C.D ? Give an example.
5. What is the function of Testis ?
6. Why are testis extra abdominal in position ?
7. Why are the number of chromosomes halved in germ cells ?
8. Why does the lining of uterus thicken every month in human females ?
9. Define fertilization.
10. Why does menstruation occur ?
11. What is the function of testosterone ?

- **Fill in the blanks.**

1. The ploidy of germ cell is \_\_\_\_\_
2. The sperms are delivered through \_\_\_\_\_
3. Pollen is released from the \_\_\_\_\_
4. The egg cell is present in \_\_\_\_\_ in the plants.
5. \_\_\_\_\_ is a method of vegetative propagation.
6. \_\_\_\_\_ and \_\_\_\_\_ are the reproductive parts of the flower.
7. \_\_\_\_\_ is a multicellular organism which shows fragmentation.
8. Using \_\_\_\_\_ many plants can be grown in disease free condition.
9. Embryo grows into a seedling by \_\_\_\_\_.

- **Give short answers :**

1. Give 2 points of difference between binary and multiple fission.
2. Diagrammatically show the process of budding in hydra.
3. Mention 2 points of differences between male and female gamete.
4. Draw L.S. of a bisexual flower.
5. Name the different parts of the human male reproductive system.

- **Answer the following :**

1. Describe the post fertilization changes in the flower.
2. What are the advantages of asexual reproduction ?
3. What are the different methods of contraception ?
4. Describe double fertilization and triple fusion in a flower.
5. Describe the various methods of asexual reproduction

- A student dipped the heads of a cockroach and a rat in water. After five minutes, he found that only one of the two animals survived. Which of the two animals might have survived ?
- Ultraviolet rays are said to be harmful to human beings, but we drink water from water filters in which such rays are used. Why is drinking this treated water not harmful ?
- Name excretory units of kidney.
- How does development affect the environment ? How can a balance be struck between the environment and development ? Explain briefly
- What is greenhouse effect ? Name two greenhouse gases.
- Write the full form of IUCD. Name any one IUCD and describe its function.
- List four functions of blood. Why does blood look red ? Which chamber of human heart receives oxygenated blood from lungs ?
- Explain the importance of fossils in deciding evolutionary relationships.
- Draw a cross-section of a leaf to show its internal parts.
- Mention three main events that take place during photosynthesis.
- Draw a labelled diagram of human female reproductive system,
- Describe the events that take place in the uterus of a woman after fertilization of egg has taken place.
- What is Succus entericus ?
- How brain is protected from injury and shock ?
- Define the term double- fertilization ?
- Write a note on Archaeopteryx ?
- Why testes are located outside the abdominal cavity in a sac called scrotum ?
- Name the finger like projection present on the inner lining of intestine and state their functions ?
- What is the composition of nervous System in higher vertebrates ?
- Give the salient feature of Darwin's- theory of natural Selection ?
- With the help of diagram describe the structure of Flower ?
- Draw a labeled diagram of Nephron and explain how Urine is formed ?
- Describe the process of Fusions, Budding and Spore formation in living Organism ?
- Define fertilization. What is the function of testosterone ?



- Write the full form of IUCD, OC, HIV, AIDS
- Why hydrogen gas is better than CNG fuel ?
- What is the roll of villi in small intestine ? and why carnivorous have shorter small intestine ?
- Write plants hormones and which of them is responsible for growth of tree.
- Write the importance of DNA copying in reproductions.
- Write four qualities of an ideal source of energy
- Write the aquatic organisms in order of who eats whom and form a chain of at least three steps.
- How can you as an individual contribute or make a difference in the management of
  - {i} water resources [ii] forest and wild life [iii] coal and petroleum.
- Compare the functioning of alveoli in the lungs and nephroun in the kidney with respect to their structure and functioning.
- Distinguish between arteries and veins
- Which chamber of heart pumps blood into lungs ?
- How do unicellular organisms dispose off their waste materials ?
- Draw a labeled diagram of Female reproductive system.
- What happens when egg is not fertilized ?
- Define ‘Phytohormones’ ?
- Give the meaning of ‘allele’?
- What is a nerve impulse ? what is the role of axon and dendrites
- Name the gland which secrete digestive enzymes and mention its hormones and their functions
- State the Biogenetic law ? What does it explain ?
- Who wrote the book ‘Philosohique Zoologique’ ? Explain his theory of organic evolution.
- What do you mean by Karyotyping ? How is it done ? How is the study of kayotypes useful ? Give an example of such. A kayotypes of a female organism shows 20 pairs of Chromosomes. How many chromosomes will you find in the egg and why ?
- What is respiration ? Explain its types ?
- What do you understand by renal failure ? Why is happens ? Can a person live after renal failure ? If yes how ?
- How can we control particulate emission ?

- How is sex determined in humans ?
- Salivation is an involuntary action. Name the part of the brain that controls this action.
- The colour of mice selected for an experiment were brown and black. Two parents BB and bb were selected and the genotype of  $F_1$  progeny obtained in an experiment on mice was brown. What is the colour of the mouse with genotype BB ?
- How is ozone layer useful to humans though ozone is itself a deadly poison ?
- (a) Write any one point of difference between lymph and blood plasma.  
(b) State any one function of lymph in our body
- When you eat a toffee, the sugar level in your blood rises. Describe how it is brought back to the normal level ?
- Study the following figure:



- (a) Write a suitable caption for the above figure  
(b) Identify the mode of reproduction in the above

- Mention any 2 problems addressed in criticisms about large dams.
- List out any 4 characteristics of a good fuel.
- Write down the three events that occur during photosynthesis in proper sequence. Also write down the chemical equation for photosynthesis ?
- Draw a labeled diagram of the longitudinal section of a flower.
- How does the uterus in female adults prepare itself every month to receive the zygote ?
- What changes occur in the uterus when the released egg is not fertilized ?
- What happens at the synapse between two neurons ?
- The human hand, cat paw and the horse foot, when studied in detail show the same structure of bones and point towards a common origin.  
(a) What do you conclude from this ?  
(b) What is the term given to such structures ?  
(c) Name two gases, other than carbon-di-oxide, that are given out during burning of fossil fuel and contribute towards acid rain formation.
- How did the 'Chipko andolan' ultimately benefit the local population ? Give any two benefits.
- Explain the Sex determination in Human.

pdfMachine

A pdf writer that produces quality PDF files with ease!

Produce quality PDF files in seconds and preserve the integrity of your original documents. Compatible across nearly all Windows platforms, simply open the document you want to convert, click "print", select the "Broadgun pdfMachine printer" and that's it! Get yours now!

- Name those parts of the flower which serve the same function as the following do in the animals :-  
(i) testis (ii) ovary (iii) eggs (iv) sperms.
- Study carefully the food chains given below :-**  
Food chain 1 : grass - grasshopper - frog ;      Food chain 2 : wheat - rat - snake - hawk  
To which of the two consumers, snake or hawk will more energy (percent) be available and why ?
- What do the following transport ?  
(i) xylem (ii) phloem (iii) pulmonary vein (iv) Vena Cava.
- The genotype of green stemmed tomato plants is denoted as GG and that of purple stemmed tomato plants as gg. When these two are crossed  
(i) What colour of stem would you expect in their  $F_1$  progeny ?  
(ii) Give the percentage of purple-stemmed plants if  $F_1$  plants are self pollinated.  
(iii) In what ratio would you find the genotypes GG and Gg in the  $F_2$  progeny
- Why are environmentalists insisting upon 'sustainable natural resource management' ? Give any three reasons.
- Draw the diagram of heart and label its four chambers. Construct a table to show the functions of these four chambers.
- Plants absorb water from the soil. How does this water reach the tree tops ? Explain in detail.
- What is the effect of sympathetic and parasympathetic nerves on lungs ?
- Name the enzymes used for the following biological reactions :  
a) Glucose  $\rightarrow$  Ethyl alcohol   b) Starch  $\rightarrow$  Glucose
- What is a reflex action ? Explain with the help of an example.
- How do plants obtain food ? What are the two phases of photosynthesis ?
- Describe with labelled diagram the alimentary canal of man
- 'Ontogeny repeats phylogeny' ? Explain the meaning of this statement
- Mention three methods to control water pollution
- What is soil erosion ? What are its causes and effects ? How can it be checked ?
- Write the balanced chemical equation for photosynthesis.
- Why is the iodised salt advisable ?
- Write two disadvantages of using a solar cooker.
- What are the different ways in which glucose is oxidized to provide energy in various organisms ?

- Write animals' hormones and which of them is responsible for sugar in human.
- What would be the consequences of a deficiency of haemoglobin in our bodies ?
- Hydrogen gas has been used as a rocket fuel. Would you consider it a cleaner fuel than CNG ? Why or why not ?
- What is biomagnifications ? Will the levels of this magnification be different at different levels of the ecosystem ?
- Suggest four approaches towards the conservation of forests
- Write the three R's to save the environment
- Draw the labeled diagram of human brain .What is the role of brain in reflex action
- What are the components of the transport system in highly organized plants ?
- Draw the labeled diagram of human heart.
- What is the function of digestive enzymes ?
- Draw a labeled diagram of artificial kidney (Hemodialysis)
- What are the functions performed by the testis in human beings?
- What is variation ?
- What are the two functions of testes ?
- How root and stem respond to gravity ?
- What is meant by systole & diastole
- **Give reasons for the following :**
  - (a) All organism have many common factor.
  - (b) Fossile furnish the direct and reliable evidence for evolution.
  - (c) It is not possible to have more than six steps in a food chain.
  - (d) The flow of energy is unidirectional in ecosystem.
- Name one gaseous and one liquid excretory product of plants.
- Name the type of respiration for the given end products :
  - a )water and carbon dioxide b) ethyl alcohol.
- Mention two ways by which humans tried to conserve the wild life in our country.
- Write the main function of the following parts of the nervous system :
  - a)Forebrain b) Cerebellum c) Mid brain d) Spinal cord.

- Arrange the following according to their evolutionary closeness. (You may use Your knowledge of classification also). Whose DNA among the following do you think is most similar to that of humans : Honey bee, bird, gorilla, and fish
- Adrenalin is released in blood when you suddenly see a dog approaching towards you at a great speed. Name the two vital body systems which are affected by this hormone. What effects are produced in these systems by this hormone ?
- What are the two types of water harvesting ? How is rain water harvested? Why is rain water harvesting important in the present scenario ? (Mention any two points)
- The genotype of wrinkled seeds is denoted as rr and that of round seeds as RR. When these two are crossed,
  - (i) What shape of seeds and in what ratio would you expect in their  $F_2$  progeny ?
  - (ii) Write the genotypes of the plants obtained if  $F_1$  plants are self pollinated.
  - (iii) Why do the round seeds occur in greater ratio in the  $F_2$  generation ?
- Draw a well-labeled diagram of the longitudinal section of the ovary showing the process of germination of pollen grain.(b)Define pollination. (c) What happens to the style , stigma , petals , sepals and stamen after the fertilization occurs in the flower ?
- What are the essential components required for the process of photosynthesis ? Write the steps involved in the process of photosynthesis.
- What are the functions of saliva
- Define parthenogenesis.
- What is a cardiac cycle ?
- Give the differences between DNA and RNA.
- Draw a diagram of human alimentary canal starting from mouth and ending at anus. Label at least six parts.
- Explain the peripheral nervous system in human beings.
- Give the differences between respirations and breathing.
- Explain main types of sources of water pollution.
- Explain briefly the different types of tropic movements in plants.
- What are homologous organs ? How do they differ from analogous organs ? How does the study of comparative anatomy provide evidence in favour of organic evolution ?
- Differentiate between
  - (i) External and internal fertilization
  - (ii) Self and cross pollination.
- Name the acid present in the human stomach.

**pdfMachine**

**A pdf writer that produces quality PDF files with ease!**

Produce quality PDF files in seconds and preserve the integrity of your original documents. Compatible across nearly all Windows platforms, simply open the document you want to convert, click "print", select the "Broadgun pdfMachine printer" and that's it! Get yours now!

- Choose the non- biodegradable pollutant from domestic waste, plastics, radioactive waste, and paper.
- Mention two causes of depletion of ozone layer.
- State two vital functions of human kidney.
- Differentiate between aerobic and anaerobic respiration.
- Explain the terms reflex action and reflex arc. Give two suitable examples of reflex action.
- Describe how double circulation takes place in the human body.
- How many X chromosomes are present in the body cells of a male and a female human being ?
- Describe the role of sex chromosomes in deciding the sex of the child.
- Mention the contribution of Mendel in explaining the pattern of inheritance.
- Draw the diagram of reproductive system of human female. Label fallopian tube, uterus, cervix and vagina. What is ovulation and when does it take place during the menstrual cycle ? Where does fertilization take place ?
- What are meninges ?
- What is meant by gestation ?
- Give Reason of the following :
  - (a) All organisms have many common features
  - (b) Testes are located outside the abdominal cavity in a sac called scrotum ?
- What are the functions of food that we eat ?
- What is the composition of nerves system in higher vertebrate ?
- What is the triple fusion in higher plant ?
- Name the various theory of evolution proposed so far ?
- Draw the diagram of Nephron ?
- In Brief describe the various type of plant movement ?
- What are the various evidences in favour of evolution ?
- Describe the causes of circulation of blood from heart to organs and back to heart ?

**pdfMachine**

**A pdf writer that produces quality PDF files with ease!**

Produce quality PDF files in seconds and preserve the integrity of your original documents. Compatible across nearly all Windows platforms, simply open the document you want to convert, click "print", select the "Broadgun pdfMachine printer" and that's it! Get yours now!

- Give an advantage of solar cell over windmill.
- Name the type of reproduction in Leishmania.
- When we eat something we like, our mouth 'Waters'. What is the actual meaning of this statement ?
- What is advantage of taking in of water by fish through their mouth and forcing it past the gills ?
- Compare the intestinal length of herbivores and carnivores.
- Give three common features in lungs and gills.
- Give the function of thymus gland and pineal gland.
- What do you mean by Coliform ?
- Why there is need to clean aquarium time to time.
- Give two limitation of nerve impulse. How can our body over come this ?
- **Answer the following by giving reason :**
  - (a) Fossil furnishes the direct and most reliable evidence for evolution.
  - (b) All organisms have many common features.
  - (c) Tail of mice appears in next generation of it if its tail is cut down.
  - (d) Artificial selection is beneficial.
  - (e) The population of red beetles disappeared and green coloured beetles population increased in each
  - (f) generation in spite of presence of predator like crows ?
- Draw diagram of female reproductive system in humans and mark the organs where fertilization and implantation takes place.
- What happens if egg is not fertilized ?
- After fertilization, a tissue is formed called placenta, explain its structure and functions ?
- Name a plant parasite ?
- State function of cytokinins ?
- Name the ornamental plants produce by tissue culture ?
- Write a note on Archaeopteryx ?
- If you chew a pieces of bread for a long time it taste sweet why ?
- What is reflex Action ? Give example of daily life ? isha my love
- Name two type of drugs used in chemical method of population control ?

**pdfMachine**

**A pdf writer that produces quality PDF files with ease!**

Produce quality PDF files in seconds and preserve the integrity of your original documents. Compatible across nearly all Windows platforms, simply open the document you want to convert, click "print", select the "Broadgun pdfMachine printer" and that's it! Get yours now!

- Different between natural & artificial selection ?
- Draw a diagram of alimentary canal label it ?
- What is meant by pollination ? Describe various type & with name of pollination ?
- Describe menstrual Cycle ?
- Describe the working of artificial kidney ?
- How do we find out the amount of water contamination regulated by Coliform bacteria ?
- How is the amount of urine regulated? Give the functioning of Nephrons in a kidney.
- Explain the three R'S in saving the environment.
- Write the functions of the following hormones:
  - (a) Thyroxin                                      (b) Adrenalin                                      (c) Testosterone
  - (d) Prolactin                                      (e) Calcitonin                                      (f) Insulin
- Why is iodised salt advisable for the human beings ?
- How is blood pressure measured ? What are the features of Hypertension ?
- Distinguish giving suitable examples between aerobic and anaerobic respiration. What are the end products of two types of respiration ?
- Draw a neat labeled diagram of the fertilization process in plants and label the following parts:
  - (a) Ovary (b) Pollen tube (c) Antipodal cells (d) Synergids
- What are the brief benefits that society can get from Silviculture ? Why do we need to conserve forests and wildlife ?
- Explain how the absorption of food molecules is carried out in the small intestine.
- What are the different methods to avoid pregnancy ? Write a note on Parturition.
- Explain the role of each part in human excretory system in filtering out waste products from the body. Draw the relevant diagram with neat labellings.
- What is the role of mucus in our stomach ?
- What is a neuro-muscular junction ? Add a note about neuro-transmitter.
- How are small intestine designed to absorb the digested food ?
- What are olfactory lobes ? What is a cerebro-spinal fluid.
- Mention three main points of differences between ozone and O<sub>2</sub>.

**pdfMachine**

**A pdf writer that produces quality PDF files with ease!**

Produce quality PDF files in seconds and preserve the integrity of your original documents. Compatible across nearly all Windows platforms, simply open the document you want to convert, click "print", select the "Broadgun pdfMachine printer" and that's it! Get yours now!



- State in brief the 10% law of energy transfer in a food chain.
- Explain why the lungs contain a residual volume of air.
- Explain Darwin's theory of natural selection.
- Why we need to conserve our resources like coal and petroleum ?
- Describe the water harvesting system in Khadins with reference to the water scarcity prevailing in the country.
- Draw and explain the structure and function of each and every organ in the excretory system in human beings.
- Give two examples of recyclable materials ?
- Name four Plant Hormones ?
- Which organ secretes the Hormone Insulin ? State its location and function in the Human body ?
- Why are thermal Power Plants set up near coal or oil fields ?
- Explain the function and location of Male reproductive system in human beings ?
- Explain Aerobic and Anaerobic Respiration ?
- Explain the three R's in conserving Natural Resources ?
- Draw a neat diagram of the Longitudinal Section of a Flower ?
- What is a Tropic Level ? Name the various Tropic Level's in a Food Chain ? Who occupy the highest position in a food chain ?
- How Mendel does's discovered that traits may be dominant or recessive ?
- Draw a neat and labeled diagram of Human Brain ?
- Write the Various functions of Hind- Brain ?
- Explain Double Circulation with the help of a neat and labeled diagram ?
- What is biodiversity ?
- Name the two endocrine glands in the brain.
- What happens at the synapse between two neurons ?
- How do Mendel's experiments show that traits are inherited independently ?
- How does our body respond when Adrenaline is secreted into the blood.

- What are auxins ? Where is it synthesized ? Write its role in bending of plants towards light.
- Give three differences between male and female reproductive system.
- Describe the structure and function of nephron with the help of a neat labeled diagram.
- What is wind energy farm ? Why it can be established only at specific location Give reasons to support your answer
- Explain the process of digestion of fats and Protein in our body
- How does genes control the characteristics ?
- Explain the following 1)genetic drift 2) Acquired and inherited traits
- Differentiate between plant movements depend on growth and independent of it
- Discuss the transportation of water and food in plants
- How does chemical coordination occur in plants ?
- How are involuntary actions and reflex actions different from each other ?
- What are photo receptors and olfactory receptors ?
- Which part of the brain controls the heart beat, blood vessels and breathings ?
- Name the part of the brain which controls equilibrium and muscular movements.
- What is the role of the brain in reflex action ?
- What are endocrine glands ?
- What are some patients of diabetes treated by giving injections of insulin ?
- What is neuron ?
- What are phytohormones ?
- Name the structural and functional units of human nervous system.
- Name a growth regulator found in plants.
- What is Geotropism ?
- What is the utility of feedback operated by hormone ?
- What is cranium? What are its functions ?

- Explain 'reflex action' with a suitable example.
- Draw a diagram of human brain and label on it the following of its parts: Cerebrum, Medullaoblongata , Meninges, Cerebellum.
- What are the overall functions of the human brain ?
- Write function of thyroxine hormone ? Which endocrine gland secretes this hormone ?
- Draw a diagram of the nervous system in an insect.
- Write down three main differences between Auxins and Cytokines.
- What is Phytohormone ? Name two phytohormones
- Explain the terms analogous and homologous organs with examples.
- Explain the importance of fossils in deciding evolutionary relationships.
- Define  $F_1$  and  $F_2$  generations.
- State Mendel's (a) Law of Segregation and (b) Law of Independent Assortments.
- "Genes and chromosomes have similar behavior." Justify.
- Differentiate between homologous organs and analogous organs.
- How is the study of fossils considered significant ?
- Who proposed the 'Theory of Natural Selection ? Explain this theory briefly.Why was this theory criticized ?
- Define heredity.
- Explain the mechanism of sex determination in the zygote.
- A man having blood group A marries a woman having blood group O and they have a child. What will be the blood group of the child ?
- How do Mendel's experiments show that traits are inherited independently ?
- Define biodegradable wastes.
- Define decomposers. Name one decomposer.
- Which of the following belong to the same trophic level : Tree, Frog, Snake, Grass, Lizard.
- Name the group of chemical compounds which damages the ozone layer.
- What would happen if all the decomposers were eliminated from the Earth ? Explain with reasons.
- Give an example of a food chain operating in fresh water pond. Mention the food habit of each trophic level in this food chain.

- **Consider the food chain:**

Grass-----→Deer-----→Lion. What will happen, if lions are removed from the above food chain ?

- In terms of energy, which is at an advantageous position-a vegetarian or a non-vegetarian ? Why ?
- With the help of food chain explain how biological magnification of harmful chemicals can occur.
- What is the difference between the food habits of organism belonging to the first and third trophic levels ?
- Give example each of organisms belonging to these trophic levels.
- What is a food chain ? Write the food chain operating in a pond. State the food habit of each trophic level in this food chain.
- Where is ozone layer found in atmosphere ? What is its importance? Write the harmful effects UV rays.
- A non- biodegradable toxic chemical has entered into the food chain. Which type of food habit will you suggest to a man, vegetarian or non-vegetarian? Explain with the help of a food chain. The food chain which you would suggest, is advantageous in another aspect. How ?
- Name the process by which the volume of solid wastes can be reduced.
- What is meant by non-biodegradable waste materials ?
- Why are plants called producers ?
- Which of the following belong to the same trophic level? Goat, Spider, Plants, Hawk, Rat.
- State two causes and two effects of the depletion of ozone layer in the atmosphere.
- How non-bio degradable substances would affect the environment.
- Grass ---→ Grasshopper ---→ Frog-----→ Snake ---→ Peacock. What will happen to the members of different trophic level in the food chain, if all the frogs of that area are removed ?
- How do food chains get shortened ? How does their shortening affect the biosphere ?
- The following are the organisms found in the grass land. Construct a food chain with four trophic levels : Seed eating birds, Grass hopper, Lion, Green plants, Rat, Deer, Frog, Snake.
- Consider the following food chains : Grass ---→ Mice ---→ Snakes -----→ Peacocks  
If in this chain, 100 J of energy is available at the producer level, then calculate the energy transferred to the peacocks as food. State the law used in calculations.
- What is ten per cent law ? Explain with an example how energy flows through different trophic levels.

- What would happen if the ozone layer in the atmosphere completely disappears ?
- Name two waste materials which can be recycled ?
- Write the full name of DDT.
- Give the names of two non-biodegradable wastes which pollute our environment.
- What is the difference between a food chain and a food web ?
- What is the difference between the food habits of organisms belonging to second and fourth trophic levels ?
- Give example each of organisms belonging to these trophic levels.
- Which food chains are advantageous in terms of energy ? Support your answer giving one example.
- How biodegradable substances would affect the environment.
- What is biological magnification ? Will the levels of this magnification be different at different levels of the ecosystem ?
- What is ozone layer ? Write about its importance. Which radiations are absorbed by ozone layer ? What are the causes of the depletion of ozone layer? Which diseases are likely to be caused if the ozone layer become thinner ?
- Why are some substance biodegradable and some non-biodegradable ?
- What is a food chain? How does study of food chain in an area or habitat help us ? Give an example of four-step food chain operating in a large lake.
- What is garbage ? What does garbage consists of ?
- What is the ultimate source of energy for organisms ?
- What are the various steps of food chain called ?
- How is ozone formed ?
- What are omnivores ? Give one example.
- What will happen if we kill all the organisms in one trophic level ?
- What is biological magnification ? Will the levels of this magnification be different at different levels of the ecosystem ?
- What are the problems caused by the non-biodegradable wastes that we generate ?
- What is the role of decomposers in the ecosystem ?

**pdfMachine**

**A pdf writer that produces quality PDF files with ease!**

Produce quality PDF files in seconds and preserve the integrity of your original documents. Compatible across nearly all Windows platforms, simply open the document you want to convert, click "print", select the "Broadgun pdfMachine printer" and that's it! Get yours now!

- What are 'Ecological Pyramids'?
- Draw an ecological pyramid having four trophic levels with snake as one of its component.
- The number of malaria patients in a village increased tremendously when large number of frogs were exported from the village. What could be the cause for it ? Explain with the help of a food chain.
- Define an ecosystem.
- How biodegradable substances would affect the environment.
- How non-biodegradable substances would effect the environment.
- Give an example of a four step food chain operating in grassland. Name the secondary consumer in this food chain.
- What are ecological pyramids ?
- Write the full form of CFC. What harm do they cause ?
- Name the process by which the volume of solid wastes can be reduced.
- Give two harmful effects of U.V radiation.
- Why is damage to the ozone layer a cause for concern ? What steps are being taken to limit this damage ?
- What is meant by non-biodegradable waste material ? Give its two examples.
- How does recycling of matter or waste materials help in ecological balance ?
- What will happen if all the deer are removed from the earth ?
- Distinguish between the autotrophs and decomposers.
- Differentiate between biodegradable and non-biodegradable substances.
- How is recycling of waste materials help in maintaining ecological balance ?
- State and explain the 10 per cent law.
- What is ozone layer ? Write about its importance. Which radiations are absorbed by ozone layer ? What are the causes of the depletion of ozone layer? Which diseases are likely to be caused if the ozone layer become thinner ?
- What is the name of the award given in honour of the movement started for protection of 'Khejri tree'?

- Name two fossil fuels.
- What is Ganga Action Plan ?
- What do you mean by wild life ?
- What is sustainable development ? Suggest any one method to achieve it
- How local people can be used for successful forest management
- Why should we conserve forest and wild life ?
- Explain why, despite good rains, we are not able to meet the demand for water of the all people in our country.
- Explain some of the problems associated with the construction of dams.
- What is Silviculture ? What are its advantages ?
- Name four main stakeholders in the management of forest resources.
- Name the most common practice of recharging ground water. Describe briefly the 'Khadin' system of rain water harvesting practiced in Rajasthan. What is the main purpose of rain water harvesting ?
- What is 'Narmada Bachao Andolan' ?
- Name the bacteria whose presence in the water indicates its contamination with disease causing micro organisms.
- Name the rivers with which the following dams are associated.  
(i) Tehri Dam (ii) Sardar Sarovar Dam
- Define sustainable development.
- What is Chipko Movement ? What is its significance ?
- In some areas of the country there may be much rainfall but still it may remain water deficient. Explain.
- Write about the overview of National Resources Management.
- Give two examples of recyclable materials ?
- Name four Plant Hormones ?
- Which organ secretes the Hormone Insulin ? State its Location and Function in the Human Body ?
- Why are thermal Power Plants set up near Coal or Oil Fields ?
- Explain the function and location of Male Reproductive System in Human Beings ?

- What are the functions of saliva ?
- Define parthenogenesis.
- What is a cardiac cycle?
- Give the differences between DNA and RNA.
- Draw a diagram of human alimentary canal starting from mouth and ending at anus. Label at least six parts.
- Explain the peripheral nervous system in human beings.
- Give the differences between respiration and breathing.
- Explain main types of sources of water pollution.
- Explain briefly the different types of tropic movements in plants.
- How Mendel discovered that traits may be dominant or recessive ?
- Draw a neat and labeled diagram of Human Brain ?
- Write the Various functions of Hind- Brain ?
- Explain Double Circulation with the help of a neat and labeled diagram ?
- Where is protein digesting enzyme pepsin released and how is it not able to act on stomach wall ?
- Give any two sources of variation in asexually reproducing organism.
- How does the disappearance of all the fungi and bacteria affect the fish population in an aquatic ecosystem?
- A potato plant synthesises the food in the form of glucose and stores in form of starch. How does glucose reach to storing parts and in which form?
- The genotype of white seed coat gram is BB and yellow seed coat gram is bb. When these two are crossed. (i) What colour of seed coat would you expect in their  $F_1$  progeny? (ii) Give the percentage of yellow seed coat plant if  $F_1$  plants are self pollinated. (iii) In what ratio would you find the genotype of BB and Bb in the  $F_2$  progeny ?
- Name the excellent fuel and what is the percentage of Methane in it? State its use. Name the type of microorganism involved in producing this gas.
- Define germination and make labeled sketch showing the structure of a gram seed.
- Which part of the brain maintains posture and equilibrium of the body? How does phototropism occur in plants



- Write one feature which is common to each of the following pair of term/ organs. (i) Ovary / Testes (ii) Arteries / Phloem (iii) Egg yolk / cotyledon (iv) Fission / vegetative propagation (v) Vas deferens / fallopian tube.
- Quote three instances where human intervention saved the forests from destruction.
- Describe surgical methods of birth control. “It is matter of chance whether a couple will give birth to a boy or a girl.” Justify the statement.
- What do you mean by Evolution.
- Write the types of Hormones found in animal
- Why do we need to manage our Resources
- What is Geothermal and Nuclear Energy ?